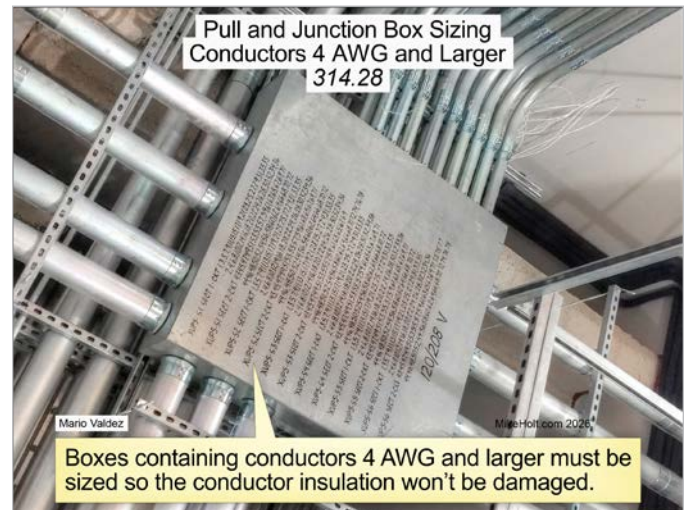


314.28 Pull and Junction Boxes

Boxes containing conductors 4 AWG and larger must be sized as follows: ▶Figure 314-24



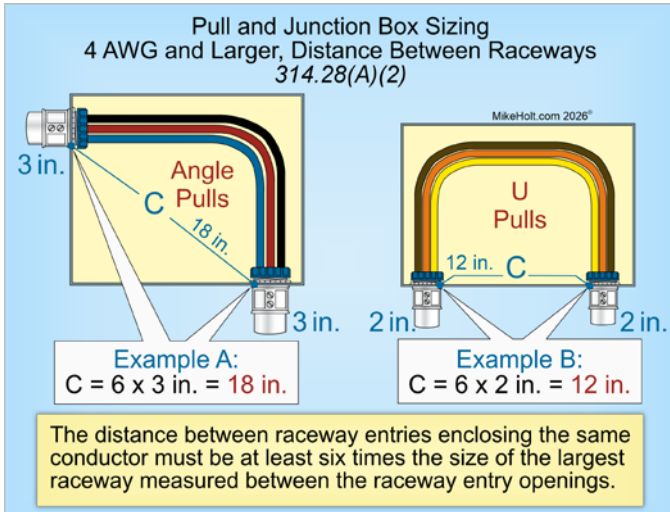
▶Figure 314-24

Author's Comment:

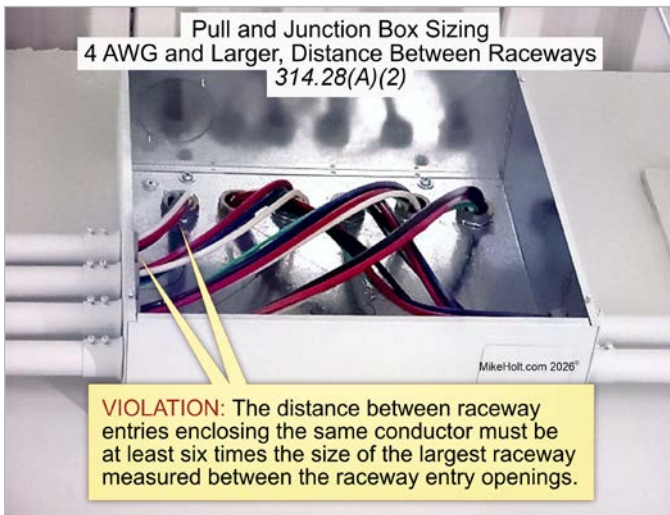
- ▶ The requirements for sizing boxes containing conductors 6 AWG and smaller are contained in 314.16.

(A) Minimum Size. The minimum dimensions of boxes must comply with the following:

- (1) Straight Pulls.** The distance from where the raceway enters the box to the opposite wall of the box must be at least eight times the size of the largest raceway. ▶Figure 314-25

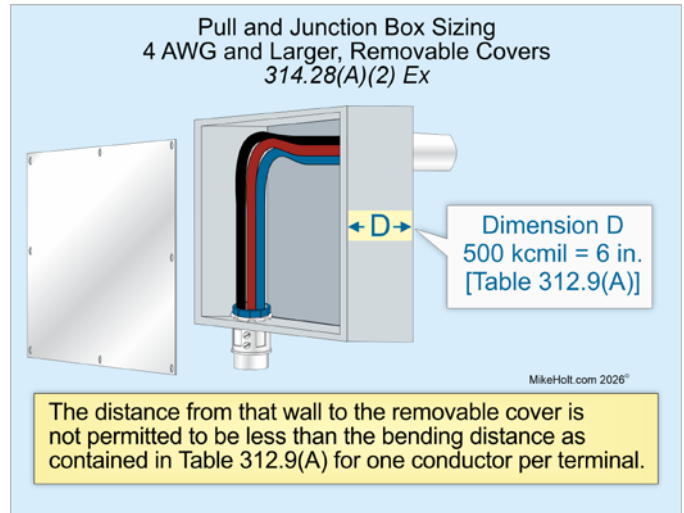


▶Figure 314-29



▶Figure 314-30

Ex: When conductors enter an enclosure opposite a cover, the distance from that wall to the removable cover is not permitted to be less than the bending distance as contained in Table 312.9(A) for one conductor per terminal. ▶Figure 314-31



▶Figure 314-31